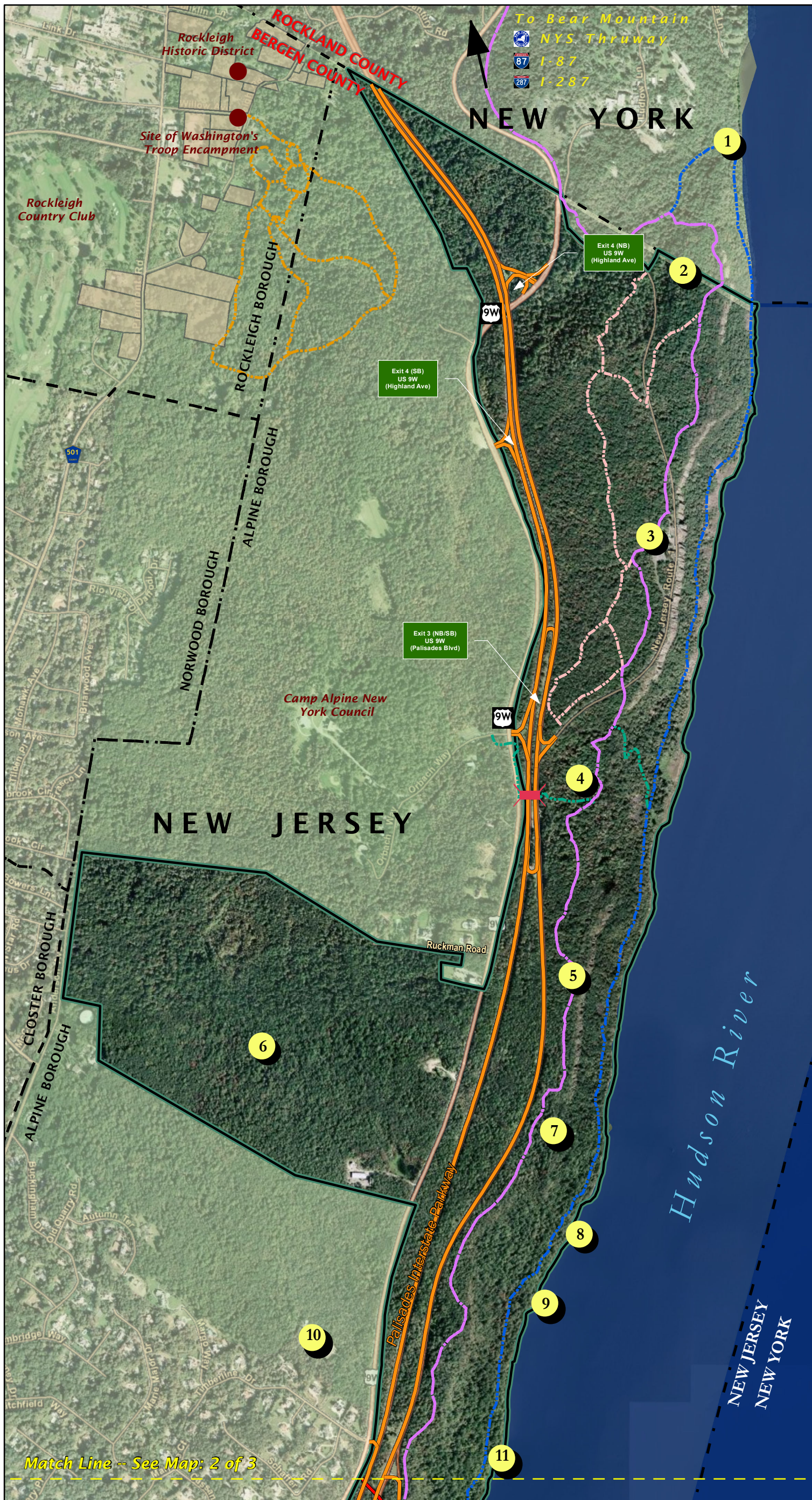


PALISADES SCENIC BYWAY

POINTS OF INTEREST MAP



Map: 1 of 3

Palisades Scenic Byway Corridor Management Plan

JANUARY 2011

LEGEND

- PIP Scenic Byway (NJ Section)
- Henry Hudson Drive
- Palisades Interstate Park
- Parks & Open Space
- Historic Properties
- Historic Sites
- Pedestrian Overpass

Bergen County Hiking Trails

- Long Path
- Shore Trail
- Ski Trail
- Forest View Trail
- Other Trails

Points of Interest:

- 1 Peanut Leap Cascade
- 2 State Line Boundary Monument
- 3 State Line Lookout and Inn
- 4 Women's Federation Monument
- 5 Ruckman Point
- 6 Camp Alpine New Jersey Council
- 7 Bombay Hook/ "Man-in-the-Rock" Pillar
- 8 Point Comfort
- 9 Twombly's Landing
- 10 Armstrong Tower
- 11 Excelsior Dock and Picnic Area

0 0.25 0.5 Miles

Path: S:\Project\422800\Mapping\Basemap 011111\Basemap 1 of 3 01_11_11.mxd

Note: GIS Data obtained through NY-NJ TRAIL CONFERENCE, NJDOT & NJDEP GIS websites. Bing Maps Aerial Basemap obtained from ArcGIS.

POINTS OF INTEREST MAP

Map: 2 of 3

Palisades Scenic Byway Corridor Management Plan



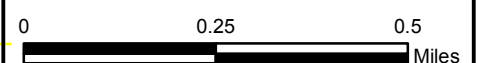
JANUARY 2011

LEGEND

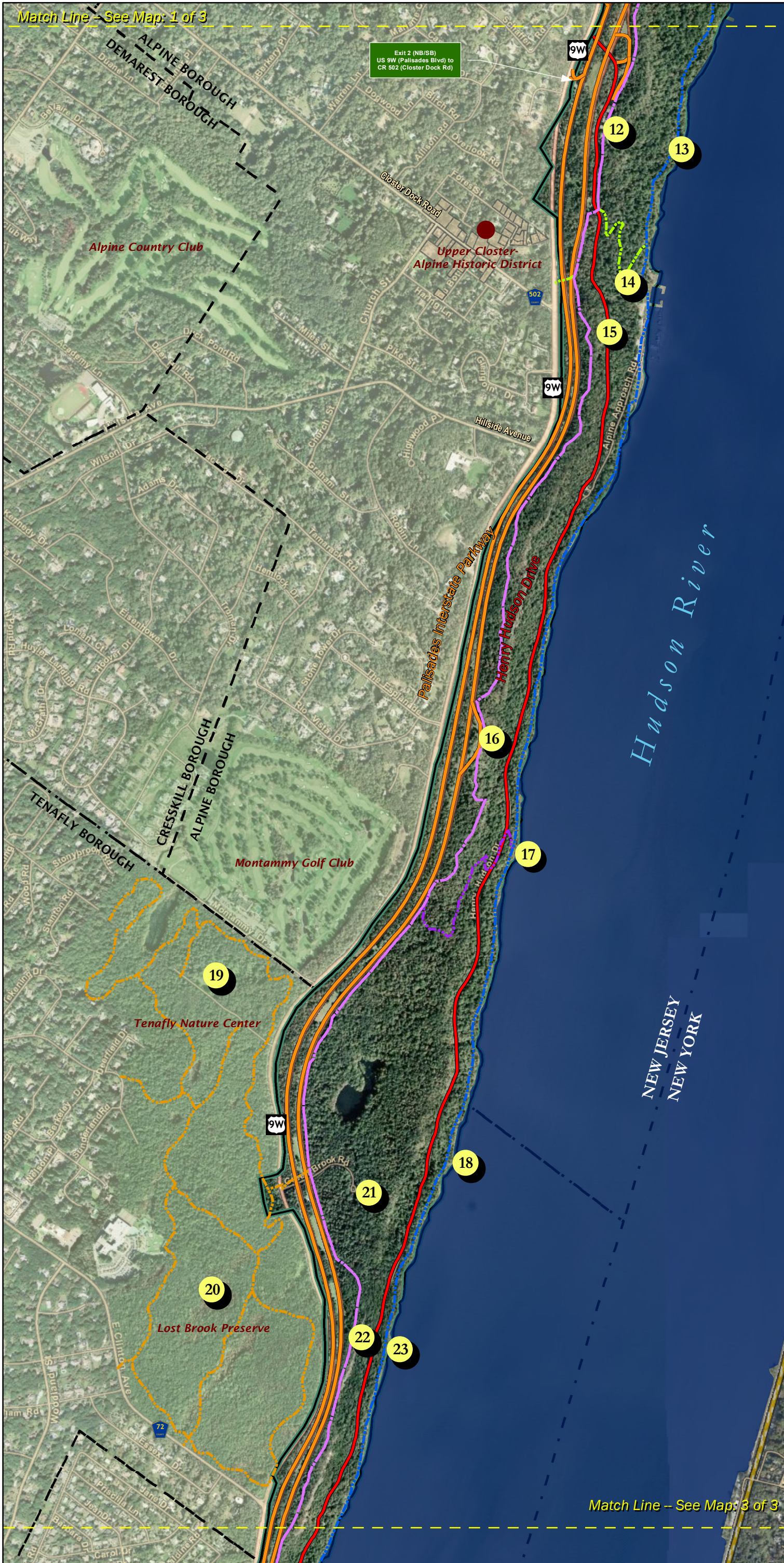
- PIP Scenic Byway (NJ Section)
- Henry Hudson Drive
- Palisades Interstate Park
- Parks & Open Space
- Historic Properties
- Historic Sites
- Bergen County Hiking Trails**
 - Long Path
 - Shore Trail
 - Huyler's Landing Trail
 - Closter Dock Trail
 - Other Trails

Points of Interest:

- 12 Palisades Interstate Park Headquarters
- 13 Cape Fly Away
- 14 Alpine Picnic Area and Boat Basin
- 15 Kearney House
- 16 Alpine Lookout
- 17 Huyler's Landing
- 18 Lambier's Dock
- 19 Tenafly Nature Center
- 20 Lost Brook Preserve
- 21 Greenbrook Sanctuary
- 22 Clinton Point
- 23 Powder Dock



Path: S:\Project\422800\Mapping\Basemap 011111\Basemap 2 of 3 01_11_11.mxd



Match Line - See Map: 1 of 3

Match Line - See Map: 3 of 3

Note: GIS Data obtained through NY-NJ TRAIL CONFERENCE, NJDOT & NJDEP GIS websites. Bing Maps Aerial Basemap obtained from ArcGIS.

POINTS OF INTEREST MAP

Map: 3 of 3

Palisades Scenic Byway Corridor Management Plan



JANUARY 2011

LEGEND

- PIP Scenic Byway
- Henry Hudson Drive
- Palisades Interstate Park
- Parks & Open Space
- Historic Properties
- Historic Sites
- Pedestrian Overpass
- Bergen County Hiking Trails**
 - Long Path
 - Shore Trail
 - Carpenter's Trail
 - Dyckman Hill Trail

Points of Interest:

- 24 Canoe Beach
- 25 Rockefeller Lookout
- 26 Undercliff Dock and Picnic Area
- 27 Bloomer's Beach
- 28 Englewood Picnic Area and Boat Basin
- 29 Allison Park
- 30 Ross Dock Picnic Area
- 31 Linwood Park
- 32 Carpenter's Dock
- 33 George Washington Bridge
- 34 Hazard's Dock Boat Ramp
- 35 Fort Lee Historic Park
- 36 Hudson River Waterfront Walkway



0 0.25 0.5 Miles

Path: S:\Project\422800\Mapping\Basemap 011111\Basemap 3 of 3 01_11_11.mxd



Note: GIS Data obtained through NY-NJ TRAIL CONFERENCE, NJDOT & NJDEP GIS websites. Bing Maps Aerial Basemap obtained from ArcGIS.